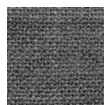


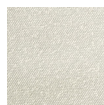
Foundry Chaise



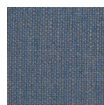
Andorra
Almond



Andorra
Pewter



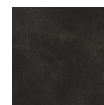
Copenhagen
Fossil



Hanson
Navy



Canyon
Whiskey
Leather



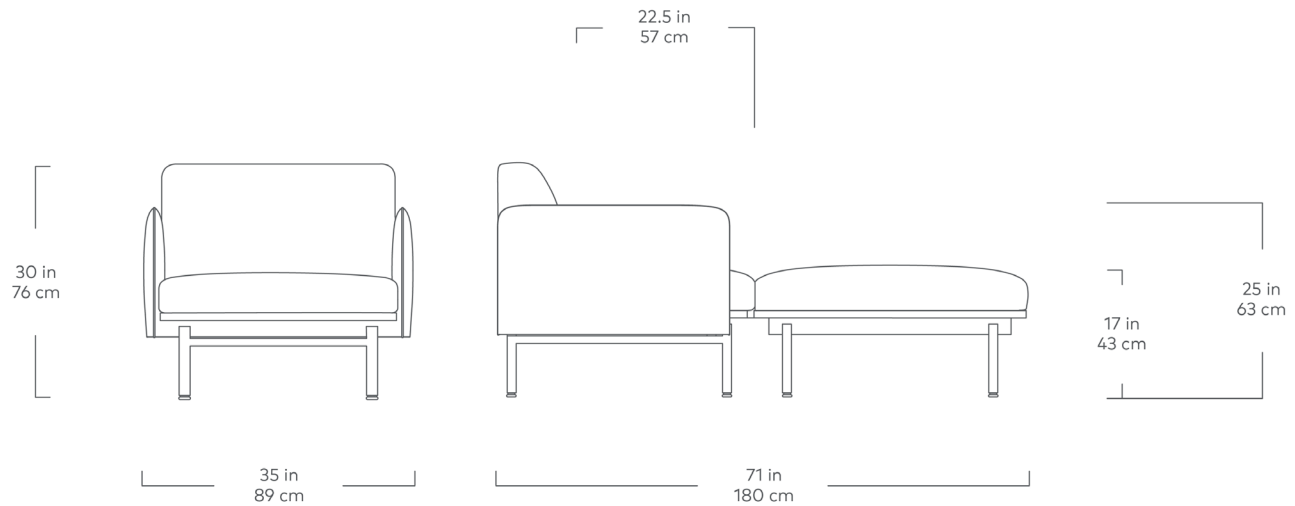
Saddle
Black
Leather

Leather not available in Canada

The Foundry Upholstery Series showcases tailored minimalism with details that elevate fashion and function to suit any residential or commercial setting. Inspired by elements of classic Scandinavian design, the Foundry Chaise offers ample sophistication as a standalone piece, showcasing striking lines, an extra slender tight back frame and cushions that seem to float above elevated, cylindrical steel legs. The chair component features a sturdy, steel reinforced FSC®-Certified frame which ensures that Foundry holds up in high-traffic environments. Available in fabric and leather. Our leather hides are carefully selected for their raw, natural surface characteristics which make each piece unique.

Design Trade Professionals: We aim to keep our designs in stock and ready to ship quickly for projects on a tight timeline. Designs may be customized with COM and alternate finishes (minimum quantities may apply). Visit guscontract.com for more information about our Trade & Contract programs.

Foundry Chaise



- Features elegant lines and thin, elevated legs.
- The tight back chaise is comprised of two components, a Foundry Chair and a Foundry Ottoman.
- Seat and Ottoman cushion are Dacron-wrapped, high resiliency, medium density foam and securely attaches to the base by hook and loop fasteners.
- Inner frame is 100% kiln-dried FSC®-Certified hardwood in support of responsible forest management (FSC® 092551).
- Frame is reinforced with steel for long lasting durability.
- 9-gauge No-Sag, sinuous spring suspension system.
- Cylindrical legs are made from black powder-coated steel.
- Non-marking leveler feet can be adjusted for stability on uneven floor surfaces.
- Available without matching Ottoman.
- Manufactured to meet California TB117-2013 fire safety standards without the use of flame retardant additives in the upholstery foam.
- All fabric is California TB117-2013 certified and double rub tested.
- Our leathers may have distinct surface characteristics, natural markings, and colour variations which differ from hide to hide and from one product to another, making each leather product unique.

